



# Linx 8920

## Continuous ink jet printers

Code more information, and on faster lines, with the Linx 8920.

The Linx 8920 CIJ printer provides flexible coding with up to 6 lines of print across a wide range of production line speeds, and with fewer maintenance interventions than other CIJ printers. With a simple, touch screen interface, and unique on-screen system monitoring with extended service intervals, the Linx 8920 is designed to make your coding life easier.

### Easy to use for quick code setup and operation

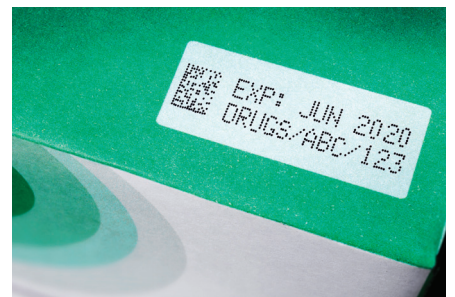
- Store up to 50 named line settings – for quick retrieval at product changeovers; settings can be transferred between printers with a USB flash drive
- Large, icon-driven high-resolution touch screen, with at-a-glance production-rate visibility
- Customisable top screen, one touch operation for common tasks, on-screen message prompts for faster, accurate code setup
- Simple, one-touch, fluid cartridge refills during printing – no mess, no tools, no mistakes
- Self-service with an on-screen Wizard which guides operators through the service module change process – for a quick, engineer-free service.

### Reliable coding for longer

- Extended service module change intervals up to 18,000hrs/24 months – code for longer without interventions
- Advanced System Monitoring – internal monitoring helps to avoid unscheduled stoppages between service module changes – reliable coding for longer
- Quick, clean startups every time – robust, completely sealed printhead, and Autoflush feature ensure continual reliable operation
- Seasonal shutdown mode – printer is ready to print first time, even after extended shutdown, with no need for expensive printer flushing.

### Flexible coding with more printing capabilities

- Linx Printernet enabled – remote monitoring and control of Linx 8900 printers via a secure, cloud-based service
- Code up to six lines of code, including 2D barcodes
- Coding at faster line speeds as standard – up to 7.28m/s for one line of code
- Carton coding option, up to 20mm high print
- Sequential text and flexible sequential number printing
- Real-time output on screen – meet your OEE targets with the printer screensaver 'On/Off target'.



# Linx 8920

## PRINTHEAD

60mm minimum bend radius in static applications. 180mm minimum bend radius in dynamic applications.



## SIDE ELEVATION



## FRONT ELEVATION



## 90° PRINTHEAD OPTION



## Technical Specifications

### PRINT SPEEDS AND SIZES

	Mk11 Midi	Mk11 Midi plus
Printhead:	Mk11 Midi	Mk11 Midi plus
Nozzle size:	62 µm	75 µm
Lines of print:	Up to 6	Up to 6
Character height range:	1.8 to 20 mm	2.1 to 20 mm
Maximum speed for single line print (5 dot high characters):	6.25 m/s (0.47 mm drop pitch)	7.28 m/s (0.57 mm drop pitch)
Maximum speed for two line print (7 dot high characters):	2.46 m/s (0.43 mm drop pitch)	2.38 m/s (0.52 mm drop pitch)
Recommended distance from printhead to substrate:	12mm (35mm for carton coding message style)	20mm (45mm for carton coding message style)

### HARDWARE FEATURES

- Easi-Change® Service Module, change interval: up to 24 months (18,000 hours) – dye-based inks, up to 12 months (6,000 hours) – soft pigmented inks\*
- Unique automatic printhead flushing: typical cleaning interval 3 months (100 starts and stops) – dye-based inks, up to 1 month – soft pigmented inks
- Printhead jet-speed control and temperature sensing for consistent printing in changing ambient temperatures
- Mistake-proof, mess-free ink and solvent refilling while printing (0.5 litre ink cartridge, 1 litre solvent cartridge)
- 10-inch full colour touch screen with tough, solvent-resistant polymer cover
- Durable ink pump with no scheduled changes required
- Extended shutdowns (up to 3 months) without printer flushing or draining
- Robust, flexible dual-tube conduit for static and moving printhead applications

### SOFTWARE FEATURES

- Single-press start print, pause print and jet shutdown
- Auto power-off after jet shutdown
- Simple message creation and editing with drag-and-drop field positioning, zoom function and insert mode for long messages
- Total print count, message count and batch count
- Message store display and message style selection
- Password-protected functions, with customisable user profiles
- Message creation/editing while printing
- On-screen output rate measurement and production stoppage log. Downloadable onto USB
- On-screen fluid level indicators, 12 hour running from fluid refill warning to printer stop in most applications

### On-screen help and diagnostics information

- PrintSync® automatic font and message format selection, based on message style selected and production line speed
- Multiple operator languages (user selectable) with on-screen keyboards, secondary keyboard for multi-language printing
- Simple line speed and shaft encoder setup wizard, for installation on new production lines
- Up to 50 line settings can be stored, with individual line names
- Message store and printer settings backup, copy and restore using USB storage device
- Simple Communications Protocol (YAML based scripts) and Linx Remote Communications Interface for connection to PCs or PLCs using Ethernet port or optional RS232 port
- QuickSwitch® message selection and editing using bar code scanner

### MESSAGE PRINTING FACILITIES

- Text, symbols and numbers
- Prompted fields for one-step message editing with customisable on-screen prompts
- Height, width and delay functions for easy code sizing and positioning
- Automatic formats for printing dates, times and date rounding (using the printer's internal clock)
- Custom date and time editor to create different date formats as required
- Automatic date forward function. Add number of seconds, minutes, hours to the current time, or number of days, weeks or months to the current date
- Automatic time adjustment option for daylight savings time
- Sequential numbering, forward and backward counting, variable intervals, multiple number ranges, alphanumeric sequencing
- One touch sequential number reset option from the printer screen, and reset using external trigger
- Sequential text fields, increment and reset sequences using external triggers, optional one touch sequence reset from the printer screen
- 'Production Schedule' function, to print a sequence of messages automatically, with different triggering and repeat print options
- Number of messages stored: up to 1000 using internal printer memory (depending on message content), more can be stored using a USB storage device
- Bold character printing (up to 9 times)
- Variable character spacing for improved vision system recognition
- Rotated character (tower) printing
- Shift coding (message content changes automatically at defined times)
- Graphics and logos can be imported into the printer as bitmap files using the USB port

### Reverse and inverted printing

- Barcodes (ITF 2 of 5, Code 39, Code 128, EAN 13, EAN 8, UPCA, Pharmacode, Data Matrix, QR Code)

### PRINTHEAD OPTIONS

- 2m conduit
- 4m conduit (option)
- 6m conduit (option)
- 90° printhead (option)
- Positive air purge to printhead (provides improved reliability in dusty or humid environments) (option)

### INK RANGE

- Linx MEK base (dye-based, soft pigmented-based)
- Linx mixed base (MEK-free, dye based)
- Linx ethanol base (MEK-free, dye based)

### CONNECTIONS/INTERFACING FOR

- Product detector
- Shaft encoder/second product detector
- External single-stage alarm output (24v) with multi-stage alarm option
- USB – for message backup and transfer, and wifi connection for Linx Printernet
- Ethernet
- Volt-free contact alarm connection (e.g. for use with external mains-driven alarm) (option)
- Dual alarm output (Volt-free and 24V output) (option)
- RS232 (option) and Parallel I/O (option)

### PHYSICAL CHARACTERISTICS

- Base and enclosure: Stainless steel
- IP55 environmental protection rating\*\*
- Mounting options: Static stand, mobile stand, bench, shelf for wall mounting
- Operating temperature range: 0 – 50°C for 1240, 1010, 1014 and 3240 ink types, (5-45°C for other MEK base, Mixed base, Ethanol base ink types)
- Humidity range (r.h., non-condensing): 90% max
- Power supply: 100-230V, 50/60Hz
- Power consumption: 38W (typical when printing)
- Power rating: 150 W
- Weight: 24.5kg (including fluids and printhead)

### REGULATORY APPROVALS

- GS, CE, EAC, NRTL, FCC

\*Interval may be adjusted in certain environments and applications to provide reliable running between service module changes

\*\*IP rating is independently verified – certificates available on request

